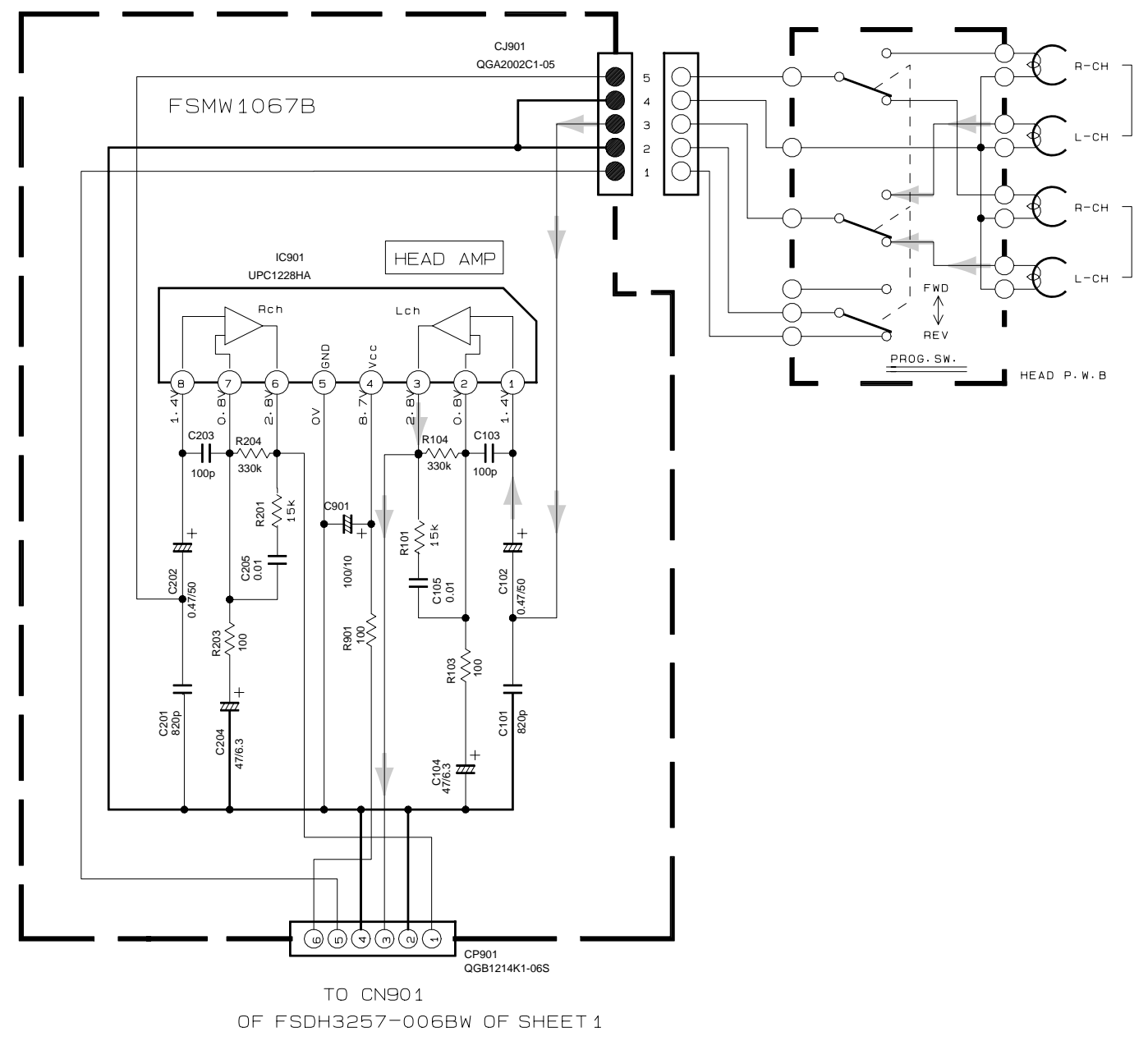
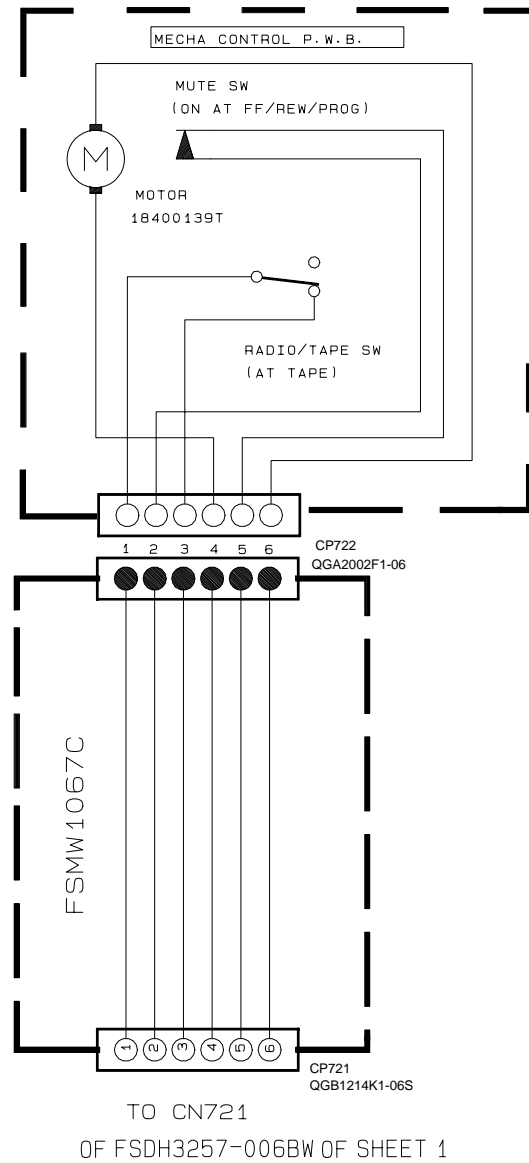


**< MEMO >**

# Standard schematic diagrams

■ Head amplifier circuit

5  
4  
3  
2  
1

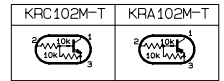


➔ Tape PB/Main signal

Receiver & System control section

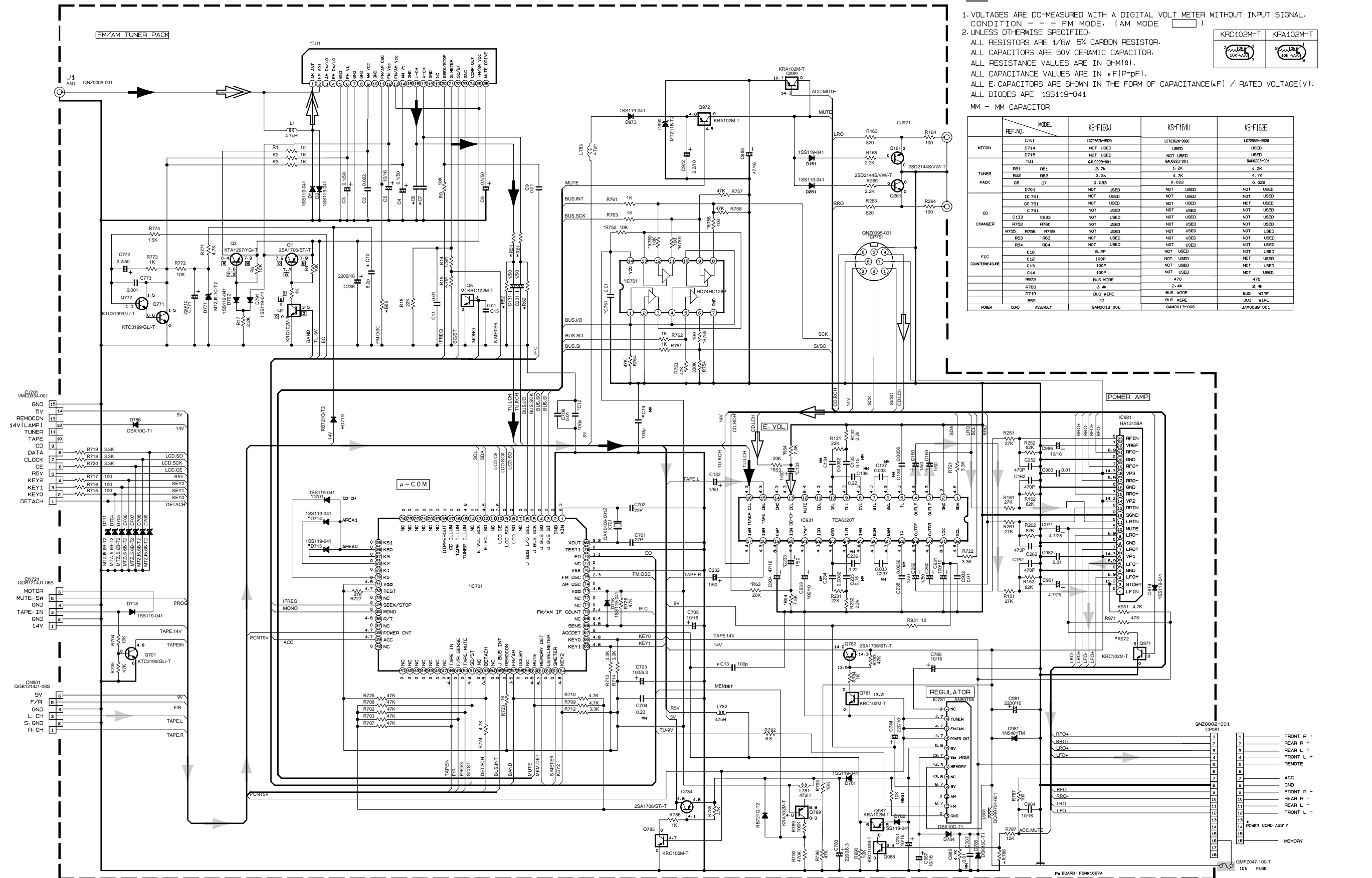
NOTES

- 1. VOLTAGES ARE DC-MEASURED WITH A DIGITAL VOLT METER WITHOUT INPUT SIGNAL. CONDITION - - - FM MODE. (AM MODE )
- 2. UNLESS OTHERWISE SPECIFIED:

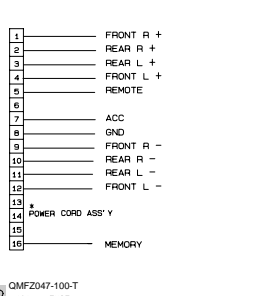


ALL RESISTORS ARE 1/8W 5% CARBON RESISTOR.  
 ALL CAPACITORS ARE 50V CERAMIC CAPACITOR.  
 ALL RESISTANCE VALUES ARE IN OHM(Ω).  
 ALL CAPACITANCE VALUES ARE IN μF(P=μF).  
 ALL E. CAPACITORS ARE SHOWN IN THE FORM OF CAPACITANCE(μF) / RATED VOLTAGE(V).  
 ALL DIODES ARE 1SS119-041  
 MM - MM CAPACITOR

REF. NO.	MODEL	KS-F160J	KS-F161U	KS-F162E
MICRON	IC701	LC7236N-980	LC7236N-980	LC7236N-980
	D714	NOT USED	USED	USED
	D715	NOT USED	NOT USED	USED
	TU1	GAU023-001	GAU023-001	GAU023-001
TUNER PACK	R51 R61	2.7K	1.8K	1.2K
	R52 R62	3.3K	4.7K	4.7K
	C6	0.033	0.022	0.033
	D701	NOT USED	NOT USED	NOT USED
	IC 751	NOT USED	NOT USED	NOT USED
	CP 751	NOT USED	NOT USED	NOT USED
	C 751	NOT USED	NOT USED	NOT USED
CHANGER	C133 C233	NOT USED	NOT USED	NOT USED
	R752 R760	NOT USED	NOT USED	NOT USED
	R759 R766 R769	NOT USED	NOT USED	NOT USED
	R63 R63	NOT USED	NOT USED	NOT USED
	R54 R64	NOT USED	NOT USED	NOT USED
FCC COUNTERMEASURE	C10	8.2P	NOT USED	NOT USED
	C12	100P	NOT USED	NOT USED
	C13	100P	NOT USED	NOT USED
	C14	100P	NOT USED	NOT USED
	R672	BUS WIRE	470	470
	R786	2.4K	2.4K	2.4K
	D719	BUS WIRE	BUS WIRE	BUS WIRE
	R69	47	BUS WIRE	BUS WIRE
POWER	CP90	ASSEMBLY	GAU013-006	GAU013-006



FM radio signal  
 CD signal  
 AM radio signal  
 Tape PB/Main signal  
 Parts are safety assurance parts. When replacing those parts make sure to use the specified one.



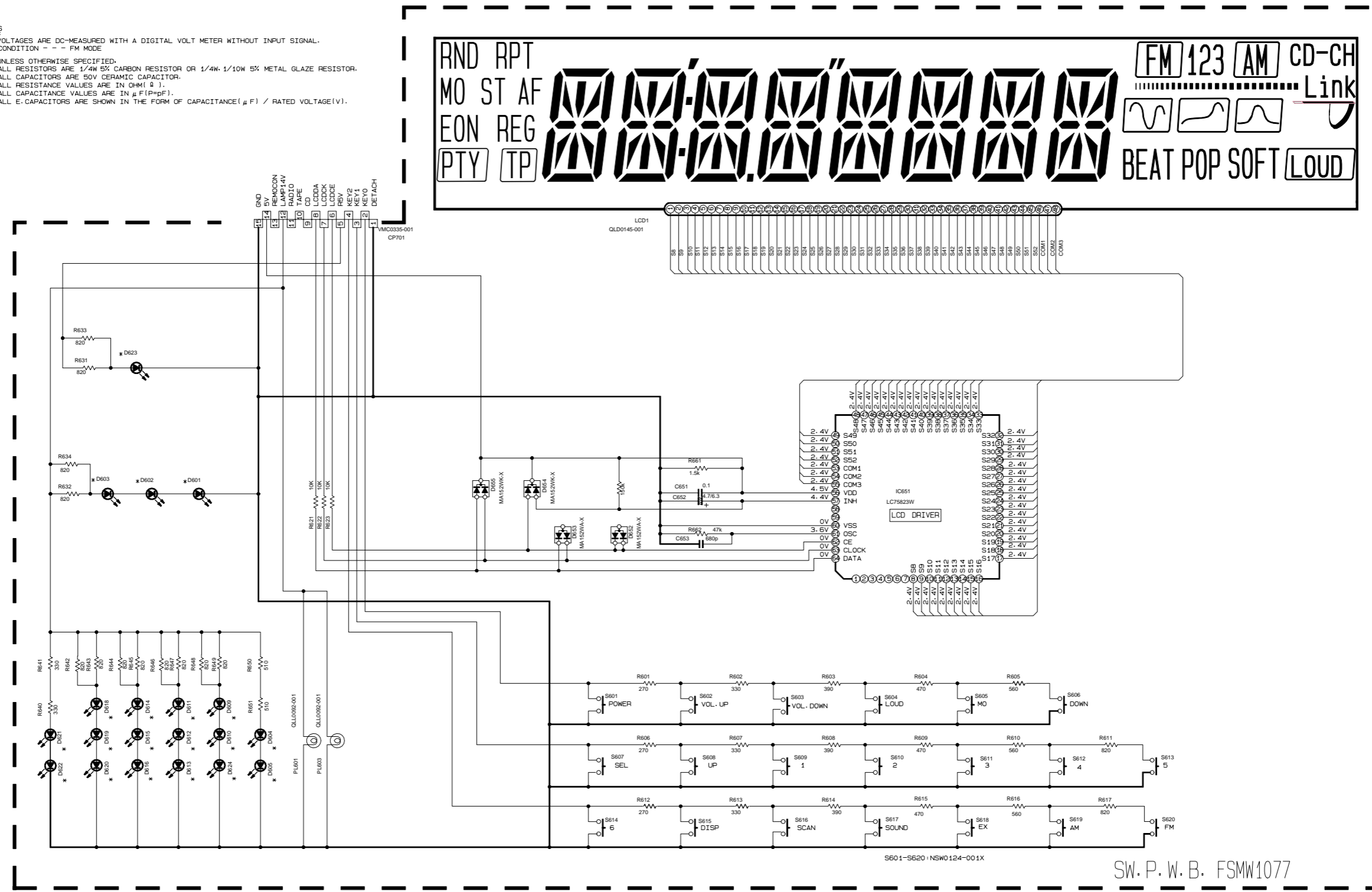
5  
4  
3  
2  
1

A B C 2-4 D E F G H

■ LCD driver & Operation switch section

NOTES

1. VOLTAGES ARE DC-MEASURED WITH A DIGITAL VOLT METER WITHOUT INPUT SIGNAL.  
CONDITION --- FM MODE
2. UNLESS OTHERWISE SPECIFIED:  
ALL RESISTORS ARE 1/4W 5% CARBON RESISTOR OR 1/4W 1/10W 5% METAL GLAZE RESISTOR.  
ALL CAPACITORS ARE 50V CERAMIC CAPACITOR.  
ALL RESISTANCE VALUES ARE IN OHM(Ω).  
ALL CAPACITANCE VALUES ARE IN μF(P=pF).  
ALL E-CAPACITORS ARE SHOWN IN THE FORM OF CAPACITANCE(μF) / RATED VOLTAGE(V).



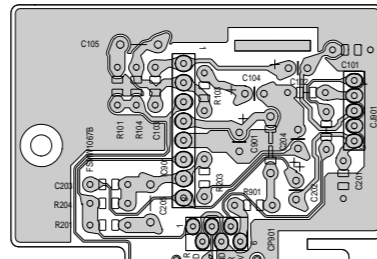
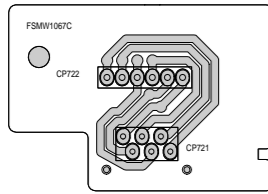
MODEL	KS-F160J	KS-F161U	KS-F162E
REF. NO.			
D601 - D622/D624	SM-310V1/A/-X	LNJ3036681/1-3/X	LNJ3036681/1-3/X
D613	LNJ3036681/1-3/X	LNJ3036681/1-3/X	LNJ3036681/1-3/X
D623	SM-310L1/M/-X	SM-310L1/M/-X	SM-310L1/M/-X

SW.P.W.B. FSMW1077

# Printed circuit boards

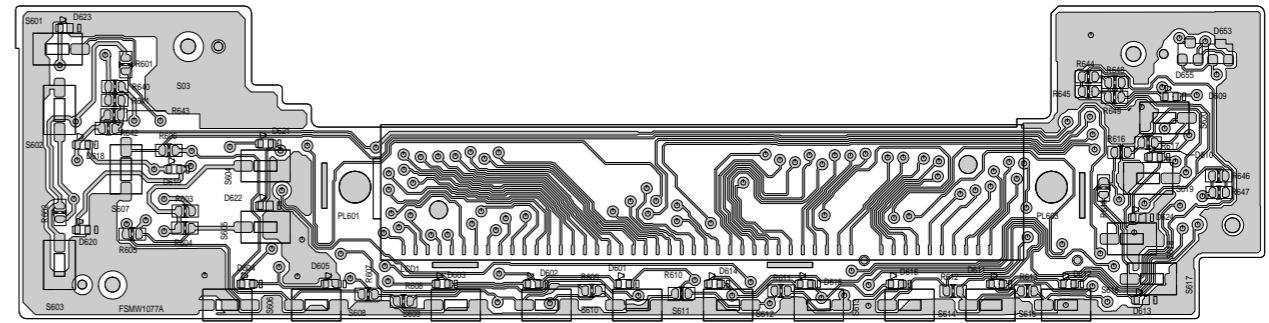
## ■ Main board

5



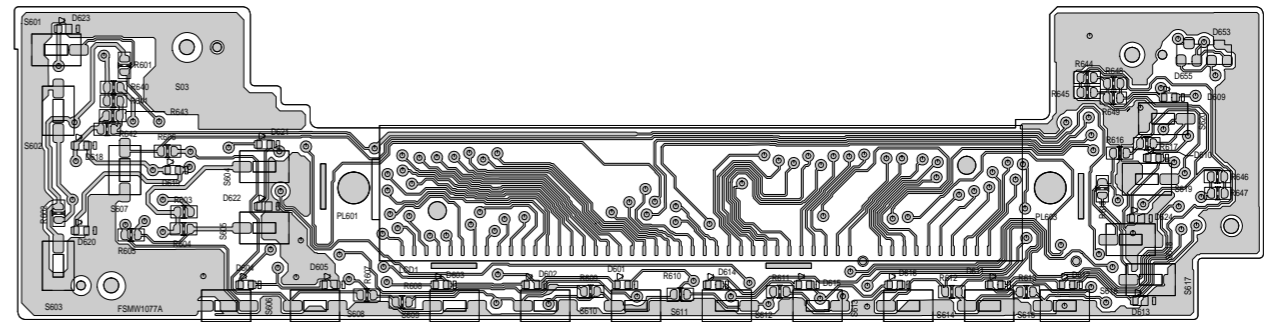
4

## ■ Front board(Forward side)



3

## ■ Front board(Reverse side)



2

1

A

B

C

2-6

D

E

F

G

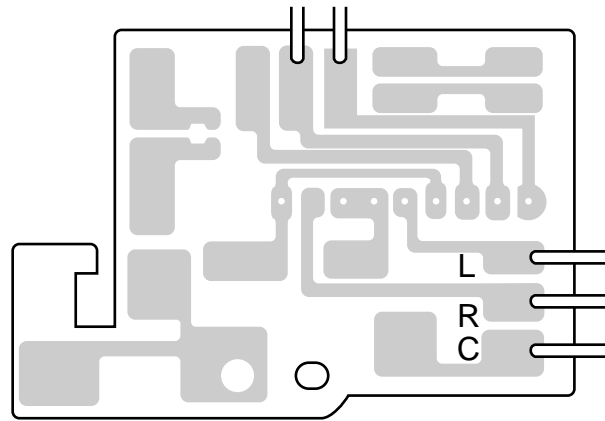
H

■Cassette mechanism boards

Mute Board



Direction switch board



5  
4  
3  
2  
1